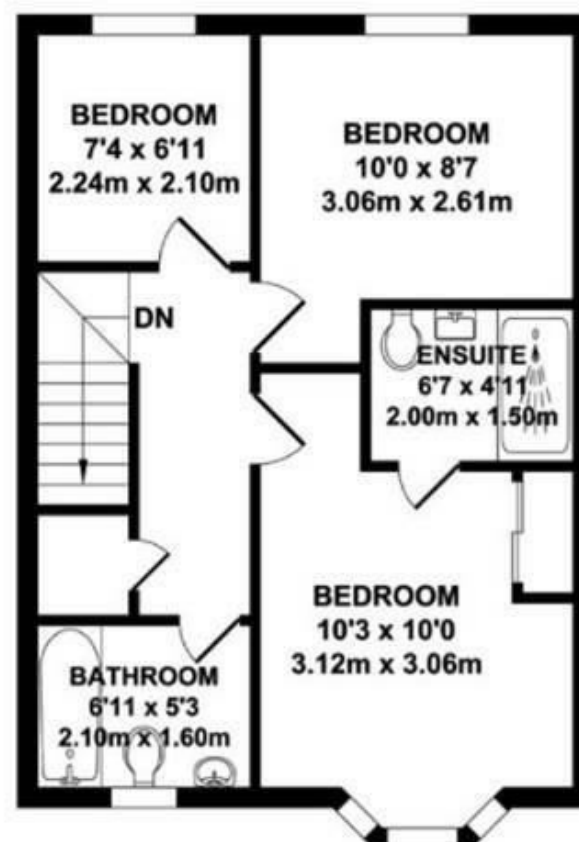


GROUND FLOOR  
APPROX. FLOOR AREA  
428 SQ.FT.  
(39.78 SQ.M.)



FIRST FLOOR  
APPROX. FLOOR AREA  
428 SQ.FT.  
(39.78 SQ.M.)

8 Liberty Square, Kings Hill, Kent, ME19 4AU  
01732 522 822  
info@khp.me



**Alderman Place**  
Kings Hill ME19 4QU  
£1,550





A lovely 3 bedroom semi detached house situated in a quiet position close to woodlands. The property is close proximity of Discovery School, the Linear Park and the Sports Park.

The internal accommodation comprises entrance hall, MODERN kitchen/diner (with electric hob/oven, fridge/freezer, washing machine), cloakroom W/C, good sized lounge with french doors to the garden, master bedroom with EN SUITE and fitted wardrobe, 2nd bedroom and third bedroom and family bathroom.

Externally there is garage and driveway to the side, rear garden, double glazing and GCH

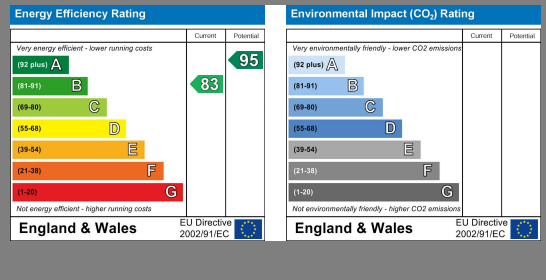
Available Now

One Small Pet Considered - Pet Rent will be charged at £20pcm

In order to arrange a viewing please contact us on 01732 522822 or email on info@khp.me

\*\* Please note, these images are library images \*\*

- Semi Detached
- 3 Bedroom
- Kitchen/Dining Room
- Living Room
- En-suite & Family bathroom
- Garden
- Car Port & Driveway
- Discovery School Catchment
- Available Now



### LOCAL INFORMATION FOR KINGS HILL

Kings Hill is a modern, concept village situated in the heart of Kent that entwines quality of life, convenience and charm to create one of the most desirable places to live and bring up a family in England. Nestled amongst attractive, landscaped gardens and protected woodland areas the Management team at Kings Hill provides landscaping and maintenance for the local residents, which means that the area is safe, clean and consistently maintained to a high standard. This American-style of "concept living" has proven very popular and it engenders a strong sense of community among the local residents. Kings Hill offers excellent commuting facilities with easy access to the M20, a regular bus service to the nearby towns of Tonbridge, Maidstone and West Malling, as well as a direct bus service to West Malling station, where trains run to London Victoria and Ashford International. The station is less than 1 mile away. Kings Hill has its own toddlers group, a pre-school nursery, three highly coveted primary schools and a youth club. The range of sports and leisure facilities are excellent. It includes shops, cafes, restaurants, 18-hole PGA championship golf course, David Lloyd health club, sports park, community centre, nature park and much more. Two miles away is the beautiful town of West Malling and all within ten miles are Royal Tunbridge Wells, Maidstone, Tonbridge and Paddock Wood. Staying closer to home Kings Hill offers Liberty Square - the hub of the village, where there is Asda and Waitrose supermarkets, eateries and further amenities (such as hairdressers, pharmacy, doctors, dentist and much more) can be found.

### DISCLAIMER

All dimensions are approximate and any floor plans are for guidance purposes only. Reference to appliances and/or services does not imply that they are necessarily in working order. Whilst we endeavour to make our Lettings particulars as accurate as possible, all interested parties must verify their accuracy themselves.

